

Working Paper Series No.11



Government of Kerala

**‘BREAKFAST TO ST STUDENTS’
IN WAYANAD**

**Evaluation Division
Kerala State Planning Board
November 2012**

Abstract

District Panchayath, Wayanad has been implementing a project 'Breakfast to ST Students' since 2008-09. The project envisages to provide breakfast to all ST students from Std. I to X in all government and government aided schools. Estimated cost of this project was Rs. 150 lakh, which was equally shared by district panchayath and respective grama panchayaths.

Major findings of study are follows:

- Percentage of annual increase prior to this project was 1.5
- After implementation of the project it was increased to 4.59 per cent, 9.18 per cent, 16.10 per cent and 16.9 per cent in 2008-09, 2009-10, 2010-11 and 2011-12 respectively
- Drop out prior to the project was 5.8 per cent, which reduced to 3.3 per cent, 2.8 per cent, 3.5 per cent and 3.2 per cent during 2008-09, 2009-10, 2010-11 and 2011-12 respectively
- There is a marginal increase in average attendance of tribal students
- Total enrolment of tribal students couldn't be achieved
- Expenditure incurred was lesser than the estimated cost

Though, the project helped to increase enrolment of tribal students, certain defects in its implementation which are circumvented on the following issues.

- Fund released to school authorities often delayed. This adversely affects the quality of the project.
- Amount allotted per student which is insufficient to meet its expenditure

Disclaimer

This working paper has been prepared by Shri.Sudheesh.C.P. Research Assistant, District Planning Office, Wayanad. The facts and figures in the report are based on quick field survey done by the author and do not reflect the views or policies of Kerala State Planning Board. The purpose of this document is to provide a comprehensive overview of the scheme/projects implemented by the Local Self Government during XI Five Year Plan.

Introduction

Wayanad lag behind in terms of social development compared to the rest of the districts in many reasons. One of its reasons is backwardness of tribes which comprise 17 per cent of total population of the district. Though the Government has initiated many schemes to uplift this community, it was not successful due to educational backwardness. Non enrolment, dropouts and absenteeism are the main obstacles faced by the authorities in the field of education among tribal community.

Most of the tribes are casual labourers; they leave their home early in the morning. They are provided food by land owner. Thus the children were taken along with the parents or students those who come to school are with empty stomach.

As an initiative to cater the problem of school education among tribal children, district panchayath, Wayanad has introduced a project 'breakfast to ST student' since 2008-09 academic year.

The Project

The project envisages to provide breakfast to all ST students from std. I to X in all government and government aided schools at least 100 working days. It started in 2008-09 academic year and extended to subsequent years. Fund allotment to schools was ₹ 5 per student.

Objectives of the Project

- To evaluate whether the enrolment of tribal students were increased.
- To assess whether the project helps to check the dropout among tribal children

The specific objectives of this project are as follows:-

- Ensure school admission of all tribal children
- Increase enrolment
- Check dropouts

Project Period

The project started in 2008-09 and extended to subsequent years. Number of working days of which breakfast supplied was 100 days.

Project Cost

The estimated cost of the project was ₹ 150 lakh which was equally shared by district panchayath and respective grama panchayaths.

Implementation of the Project

It has been implementing all the government and government aided schools except Ashram schools in the district. A district level committee has been constituted for monitoring at district level. School level PTA Committee has entrusted for implementation. Menu for each day has fixed by the Committee with local needs and availability. Varieties of dishes like appam, puttu, upma, idly, dosa, tapioca etc. were supplied on a rotation basis.

Back Ground of Evaluation Study

The State Planning Board has directed to conduct a study on any of an innovative project implemented by local body during the 11th plan period.

Methodology

The project covered 285 schools spread over 25 grama panchayaths and one municipality. The present evaluation study limited to 29 schools which is selected randomly with a justification of one school from each local body and additional schools were selected from tribal concentrated grama panchayaths viz, Thirunelly and Noolpuzha.

Primary data were collected from selected schools while secondary data were from Deputy Director of Education, Wayanad.

Tools Used

A questionnaire has been prepared for data collection. Primary data were collected by personally contacting school authorities. The study was supervised by the District Planning Officer, Wayanad with the support of all officers of District Planning Office.

Limitation of the Study

This project was implemented in 285 schools but the present study is limited to 29 schools. The number of families residing in the panchayaths is not uniform. More over, time allotted for the study was insufficient and it was carried out along with routine office work.

Dropout and Enrolment Prior to the Project

Government have initiated several schemes for educational development of tribal people like lump sum grant, monthly stipend, and free uniform and so on. However, some unfavourable factors conspire to make a significant portion of children still away from schools.

Enrolment

The number of enrolment at the time of introduction of this project in selected schools was 3353. Rate of increase was just 1.5 per cent. In lower primary section number declined to 2086 from 2131, while in upper primary section it increased to 1036 from 910. High school section also witnessed a declining trend in prior to implementation of the project.

Table 2.1
Enrolment of Students Prior to the Implementation of the Project

Sl. No	Year	No of students enrolled			
		All section	LP	UP	HS
1	2006-07	3301	2131	910	260
2	2007-08	3353	2086	1036	213

Source: school records

Dropout

The dropout rate is high among tribal children at all stages of school education prior to this project.

Table 2.2
Dropout of Students Prior to the Implementation of the Project

Sl. No	Year	Drop out (%)			
		All section	LP	UP	HS
1	2006-07	4.9	4.2	5.3	9.6
2	2007-08	5.8	4.8	6.1	13.0

Source: School records

Rate of dropout is high in high school section compared to other two sections. The survey shows that number of dropout is increasing yearly. Its percentage increased to 5.8 per cent, 6.1 per cent and 9.6 per cent in LP, UP and HS section respectively. It is worrisome to note that there is no data on the number of children in the relevant age group not attending schools.

Performance Analysis of Breakfast to ST Students in Selected Panchayaths

All government and government aided schools were selected for this project. Enrolment of students of selected schools is shown in Table 3.1.

Enrolment prior to implement this project was 3301 and 3353 in 2006-07 and 2007-08 academic year respectively. The strength of tribal children has been increased to 3507, 3661, 3893 and 3919 in subsequent years.

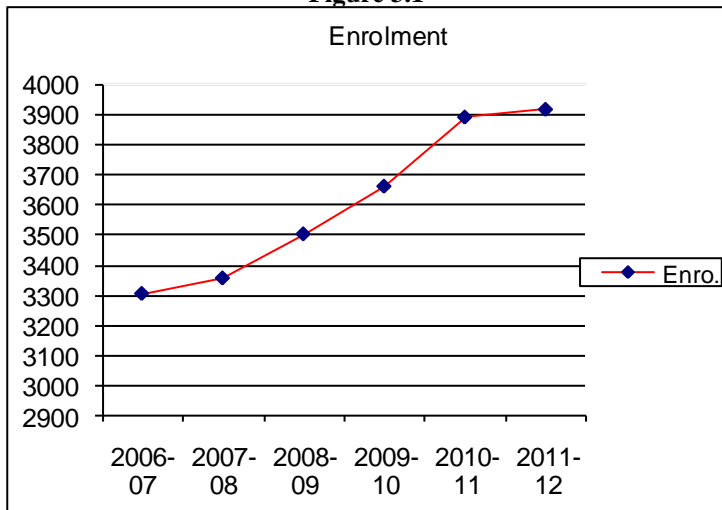
Table 3.1
Enrolment of Tribal Students from 2006-07 to 2011-12

Sl.No	Year	All section
1	2006-07	3301
2	2007-08	3353
3	2008-09	3507
4	2009-10	3661
5	2010-11	3893
6	2011-12	3919

Source: School records

The following figure shows the trend of admission of tribal children in schools.

Figure 3.1



It is found that enrolment shows an increasing trend after implementation of the project.

Dropout

The survey shows that dropout of ST students continued to be high and increasing every year till 2007-08. By implementing this project dropout was reduced considerably. However, it is increasing marginally after 2009-10 academic year.

Table 3.2
Dropout from 2006-07 to 2011-12

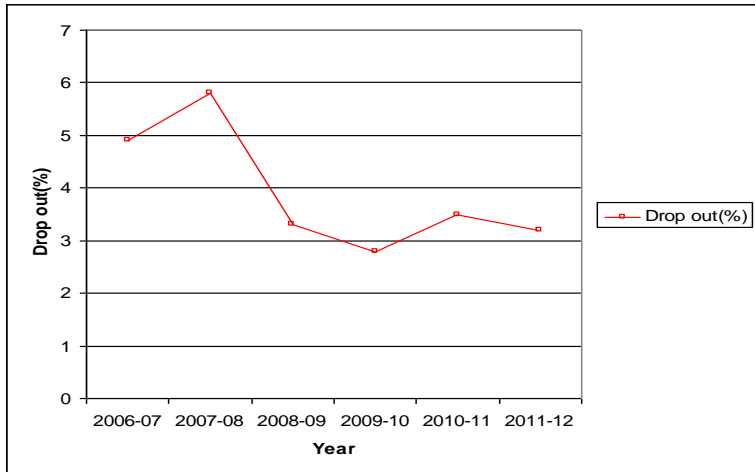
Sl.No.	Year	No.	%
1	2006-07	162	4.9
2	2007-08	194	5.8
3	2008-09	114	3.3
4	2009-10	104	2.8
5	2010-11	137	3.5
6	2011-12	126	3.2

Source: School records

Dropout rate is high in high school section and low in primary school section. (see Annexure-6,7 and 8).

The following figure shows the trend of dropouts of tribal children in schools from 2006-07 to 2011-12.

Figure 3-2



The estimated cost of this project and actual expenditure are shown below;

Table 3.4
Estimated Cost and Expenditure

Sl. No.	Year	Estimated cost	Expenditure	%
1	2008-09	4000000	3501185	87.53
2	2009-10	15000000	13575092	90.50
3	2010-11	15000000	13640704	90.94
4	2011-12	15000000	11714380	78.10

Source: DDE, Wayanad

Table shows that actual expenditure is lesser than the estimated cost in all years of implementation.

Findings, Suggestions and Recommendations

Major findings of the evaluation studies are the following:

- Percentage of annual increase prior to this project was of 1.5 per cent.
- After implementation of the project it was increased to 4.59 per cent, 9.18 per cent, 16.10 per cent and 16.9 per cent in 2008-09, 2009-10, 2010-11 and 2011-12 respectively.
- At the time of introduction of this project, the drop out was 5.8 per cent which were reduced to 3.3 per cent, 2.8 per cent, 3.5 per cent and 3.2 per cent in 2008-09, 2009-10, 2010-11 and 2011-12 respectively.
- Rate of dropout declined substantially in the initial year of project but it shows an increasing trend in upper primary and high school sections.
- Actual expenditure is less than the estimated cost which were 87.53 per cent, 90.5 per cent, 90.94 per cent and 78.10 per cent in 2008-09, 2009-10, 2010-11 and 2011-12 respectively.
- Breakfast was supplied prior to the class begins between 9.15 am and 9.45 am.

This project was implemented by the district panchayath, Wayanad with the support and participation of school authorities. PTA has a tremendous positive impact on school education in the

past four years among tribal children. However, it couldn't achieve total enrolment and eradicate dropout. Thus the following are the suggestions for improvement.

- Break fast may be extended to all working days from 100 days in an academic year.
- It may be extended to all students like mid day meal programme.
- Now, the participation of tribal parents is very low, thus their participation may be ensured.
- Advance payment of fund to school authority may be considered and claim has to be settled in succeeding month.
- Special programme may be initiated for vulnerable community viz. Paniyas and Kattunaika.
- Per student allotment has to be enhanced from Rs. 5 by taken into account of the price hike.
- Prepare list of children in the relevant age group not attending

Annexure - 1
Schools Selected for Study

Sl No	Name of School	Sub District	Local Body
1	GLPS Cheengeri	Sulthan Bathery	Ambalavayal
2	GLPS Kaippanchery	Sulthan Bathery	Sulthan Bathery
3	GLPS Marakkadavu	Sulthan Bathery	Mullankolly
4	ALPS Naiketty	Sulthan Bathery	Noolpuzha
5	GUPS Kuppadi	Sulthan Bathery	Sulthan Bathery
6	GUPS Mathamangalam	Sulthan Bathery	Noolpuzha
7	NAAUPS Manikavu	Sulthan Bathery	Meenangadi
8	St,George UPS Pulpaly	Sulthan Bathery	Pulpally
9	GHS Irulath	Sulthan Bathery	Poothadi
10	GHS Anappara	Sulthan Bathery	Nenmeni
11	GHS Vaduvanchal	Sulthan Bathery	Moopainad
12	GLPS Achooranam	Vythiri	Pozhuthana
13	GLPS Madakkimala	Vythiri	Muttill
14	GLPS Thariyode	Vythiri	Thariyode
15	GLPS Padinjarathara	Vythiri	Padinjarathara
16	RCLPS Chundale	Vythiri	Vythiri
17	St.Thomas LPS Nadavayal	Vythiri	Kaniyambatta
18	GUPS Pinangode	Vythiri	Vengappally
19	St.Joseph UPS Meppadi	Vythiri	Meppadi
20	GUPS Puliarmala	Vythiri	Kalpetta Municipality
21	GVHSSKarimkutty	Vythiri	Kottathara
22	GLPS Panamaram	Mananthavady	Panamaram

23	Panchayath LPS Thirunelly	Mananthavady	Thirunelly
24	GLPS Makkiyad	Mananthavady	Thondernadu
25	GUPS Mananthavady	Mananthavady	Mananthavady
26	AUPS Dwaraka	Mananthavady	Edavaka
27	GUPS Talappuzha	Mananthavady	Thavinjal
28	SAUPS Thirunelly	Mananthavady	Thirunelly
29	GHSS Neervaram	Mananthavady	Panamaram

Annexure 2
Number of Schools in Wayanad

Sub District	LP			UP			HS*		
	Govt	Aided	Total	Govt	Aided	Total	Govt	Aided	Total
Sulthan Bathery	35	15	50	11	16	27	15	9	24
Mananthavady	31	22	53	12	14	26	11	5	16
Vythiri	25	15	40	11	10	21	10	9	19
TOTAL	91	52	143	34	40	74	36	23	59

*exclude newly upgraded and Asram schools

Source: DDE, Wayanad

Annexure 3
Enrolment in lower primary schools

Sl. No	Name of school	2006-07	2007-08	2008-09	2009-10	2010-11	2011-12
1	GHS Irulath	114	122	55	102	107	100
2	GHS Neervaram	118	134	131	128	140	135
3	GLPS Padinjarathara	46	59	71	74	66	63
4	GHS Mathamangalam	112	114	123	106	111	92
5	GLPSMarakkada v	48	34	45	34	44	46
6	NAUPS choothupara	109	114	32	22	75	75
7	GLPS Achooranam	21	24	21	20	20	16
8	GUPS Pinangode	73	66	92	91	81	84
9	GHS Annappara	52	59	61	68	75	74
10	GLPS Kaippanchery	25	33	46	53	61	60
11	ALPS Naikatty	94	95	95	104	108	146
12	GLPS Cheengeri	68	68	58	41	42	49
13	GLPS Madakkimala	51	46	40	36	30	30
14	GHSS Vaduvanchal	53	49	41	49	45	44
15	GUPS Manathavady	59	57	56	57	58	56
16	Panchayath LP School Panavally	86	79	89	86	93	94
17	SAUPS Thirunelly	153	152	158	160	154	150
18	GLPS Makkiyad	11	16	13	14	10	10
19	AUPS Dwaraka	136	76	81	76	73	65
20	GUPS Thalapuzha	39	41	36	30	26	30

21	GLPS Panamaram	136	127	192	197	169	154
22	St.Joseph UPS Meppadi	26	26	24	23	20	19
23	GUPS Puliyarmala	28	35	38	45	44	40
24	GUPS Kuppadi	181	155	182	167	170	161
25	St.Thomas LPS Nadavayal	133	138	157	171	165	147
26	GLPS Tharitode	126	126	118	114	109	109
27	RCLPS Chundale	33	41	37	35	41	39
TOTAL		213 1	208 6	209 2	210 3	213 7	208 8

Source: School records

Annexure 4
Enrolment in Upper Primary Schools

Sl. No	Name of School	2006-07	2007-08	2008-09-	2009-10	2010-11	2011-12
1	GHS Irulath	39	30	77	84	79	88
2	GHS Neervaram	74	88	96	102	110	114
3	GHS Karimkutty	44	43	53	58	67	69
4	GHS Anappara	87	119	118	144	128	116
5	GHS Vaduvanchal	89	98	45	85	98	106
6	NAUPS Choothupara	69	74	84	81	75	75
7	GUPS Mathamangalam	68	89	98	106	117	129
8	GUPS Mananthavady	68	80	92	93	97	79
9	SAAUPS Thirunelly	0	58	64	104	110	118
10	AUPS Dwaraka	56	55	65	86	82	84
11	St.Joseph UPS Meppadi	18	25	27	26	27	27
12	GUPS Puliarmala	21	18	18	20	22	27
13	GUPS Kuppadi	138	142	164	142	155	159
14	St.George Pulpally	50	40	57	72	79	89
15	GUPS Thalapuzha	45	57	64	66	59	65
16	GUPS Pinangode	44	20	57	70	75	81
	TOTAL	910	1036	1179	1339	1380	1426

Source: School records

Annexure 5
Enrolment in High School

Sl. No	Name of School	2006-07	2007-08	2008-09	2009-10	2010-11	2011-12
1	GHS Irulath	33	23	21	33	49	47
2	GHS Neervaram	62	41	50	49	76	88
3	GHS Vaduvanchal	53	51	46	69	77	78
4	GHS Anappara	76	74	71	93	122	138
5	GVHSS Karimkutty	36	42	48	47	52	54
TOTAL		260	231	236	291	376	405

Source: School records

Annexure - 6
Dropout (Lower Primary School)

Sl. No.	Name of School	2006-07	2007-08	2008-09	2009-10	2010-11	2011-12
1	GHS Irulath	8	3	3	3	5	1
2	GHS Neervaram	5	15	4	2	2	13
3	GLPS Padinjarathara	0	0	0	0	0	0
4	GHS Mathamangalam	0	0	1	3	2	0
5	GLPSMarakkadav	0	2	7	2	1	1
6	NAUPS choothupara	0	0	0	0	0	0
7	GLPS Achooranam	3	0	0	0	0	0
8	GUPS Pinangode	12	8	2	8	5	3
9	GHS Annappara	2	1	3	3	1	0
10	GLPS Kaippanchery	0	0	0	0	0	0
11	ALPS Naikatty	3	5	3	6	2	8
12	GLPS Cheengeri	10	2	0	0	0	0
13	GLPS Madakkimala	0	0	0	0	0	0
14	GHSS Vaduvanchal	3	5	1	0	0	0
15	GUPS Manathavady	2	0	0	0	0	7
16	Panchayath LP School Panavalley	0	0	1	1	3	0
17	SAUPS Thirunelly	2	4	0	2	2	1
18	GLPS Makkiyad	1	0	1	0	3	0
19	AUPS Dwaraka	8	6	1	1	2	0
20	GUPS Thalapuzha	4	7	3	1	1	2

21	GLPS Panamaram	7	21	23	18	10	6
22	St.Joseph UPS Meppadi	0	0	0	0	0	0
23	GUPS Puliarmala	4	2	0	0	0	0
24	GUPS Kuppadi	0	0	0	1	2	4
25	St.Thomas LPS Nadavayal	5	3	4	3	5	2
26	GLPS Tharitode	7	14	4	0	0	1
27	RCLPS Chundale	3	3	3	5	5	2
	TOTAL	89	101	64	59	51	51

Source: School records

Annexure 7
Dropout (Upper Primary School)

Sl. No	Name of School	2006-07	2007-08	2008-09	2009-10	2010-11	2011-12
1	GHS Irulath	3	5	4	2	8	4
2	GHS Neervaram	6	9	4	1	6	6
3	GHS Karimkutty	5	1	3	5	16	12
4	GHS Anappara	2	2	4	6	14	8
5	GHS Vaduvanchal	5	22	7	0	0	0
6	NAUPS Choothupara	0	0	0	0	0	0
7	GUPS Mathamangalam	0	0	1	5	4	0
8	GUPS Mananthavady	2	4	0	0	0	7
9	SAAUPS Thirunelly	0	0	0	0	2	0
10	AUPS Dwaraka	4	8	8	8	8	1
11	St.Joseph UPS Meppadi	0	0	1	0	0	0
12	GUPS	6	4	0	0	0	0

	Puliyarmala						
13	GUPS Kuppadi	0	0	0	0	0	6
14	St.George Pulpally	0	0	0	0	0	0
15	GUPS Thalapuzha	9	0	0	0	5	2
16	GUPS Pinangode						
		6	8	0	5	5	3
	TOTAL	48	63	32	32	68	49

Source: School records

Annexure 8
Dropout (High school)

Name of School	2006-07	2007-08	2008-09	2009-10	2010-11	2011-12
GHS Irulath	1	3	1	5	5	6
GHS Neervaram	5	5	2	2	4	10
GHS Vaduvanchal	9	12	5	0	0	0
GHS Anappara	9	6	4	3	7	4
GVHSS Karimkutty	1	4	1	3	2	6
TOTAL	25	30	13	13	18	26

Source: School records